

DESCRIPTION AND USES

Concrete Wall Panels:

These thin concrete panels possess the attractive mottled look and smooth feel that only real burnished concrete can provide. They are lightweight and durable and can be easily adhered to walls and other vertical interior surfaces.

Concrete Panels may be applied to gypsum board, plaster, concrete, unit masonry, engineered wood panels, and other acceptable substrates.

Concrete Ceiling Tiles:

For overhead use, panels can be installed in most standard ceiling suspension grids; (do not place insulation or other back loads on panels).

Concrete Veneer - Other Uses:

Panels can also be used on cabinets, countertops, or furniture; contact Concreate for additional information.

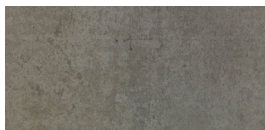


PHYSICAL ATTRIBUTES

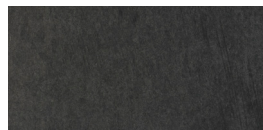
STANDARD CONCRETE COLORS



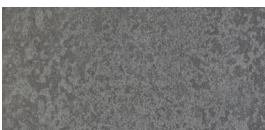
CW101
 Natural Grey
 Concrete



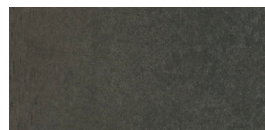
CW102
 Dark Grey
 Concrete



CW107
 Titanium Black
 Concrete



CW108
 Metal Grey
 Concrete



CW109
 Bronze Grey
 Concrete

SIZE, AREA, AND MASS

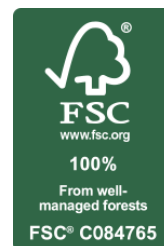
Concrete Panels:

- Size: 1200 x 600 x 4 mm (47-1/4 x 23-5/8 x 1/8 inch)
- Area: 0.72 m² (7.75 sq.ft.)
- Mass: 6.5 kg/M² (1.3 lb/sq.ft.)

COMPOSITION

Concrete Panel: 4 mm (1/8-inch) thick proprietary blend of portland cement, select fine aggregate, admixtures, recycled fibers, and fade resistant pigments.

Oil Finish: Our floors are finished with three coats of high solids, natural oils to increase the luster, durability, and stain.



TESTING DATA

ATTRUBUTE	PROTOCOL	PERFORMANCE	COMMENT
Fire Classification	ASTM E84-14	Class A	
Asbestos Content	NIOSH 9002	Not detected.	
Total Volatile Organic Compound (TVOC)	ISO 16000-6 and ISO 16000-9	1111 : g/m ³	Meets EU requirements.
Volatile Organic Compound (VOC)	CDPH Method V1.1 (CA Spec, 01350)	Compliant for schools and offices.*	
Formaldehyde	EN 717-1	Not detected	
Lightfastness	ISO 105-B02	Grade 3-4	
Chemical Resistance	EN 423	Class 0 - No Affect <ul style="list-style-type: none"> • White vinegar • Isopropyl alcohol • Mineral oil • NaOH (5%) • Bleach (5.25% NaOCl) • Olive Oil • Red & white wine • Coffee & tea 	Class 1- Very Slight <ul style="list-style-type: none"> • Hydrochloric acid (5% HCl) • Sulfuric acid (5% H₂SO₄)

SUSTAINABILITY

Wall Panels:

Our products have been independently tested for conformance with environmental requirements for VOC and formaldehyde emissions; asbestos, lead, and cadmium content.

Adhesive:

Concrete Wall Adhesive is a one-component, high-solids, modified-silane polymer with low VOC-content, low odor, and no shrinkage. It has high initial bond strength and is moisture curing, moisture resistant, and permanently elastic. It can also be used as a joint filler between panels and abutting surfaces; it is paintable, sandable, and grey in color.

LIMITED WARRANTY

Concrete provides a 10-year warranty for single-family, owner-occupied homes and condominiums; and a 5-year warranty on other projects. Visit www.Concreate.net for more detailed warranty information.

CONTACT INFORMATION

Concrete Headquarters:
11478 Hart Street
North Hollywood, CA 91605

+1 855.265.2116
www.Concreate.net
info@concreate.net

DEALER IMPRINT AND SUBMITTAL STAMPS

© 2015, Concreate LLC. Issued 2016-10, subject to change. Disclaimer: This information only a general guide and is not intended to be exhaustive. It is for use by qualified design and construction professionals only. Further information is available upon request.